

Bottom hung INWARD OPENING MECHANICAL EXUFACE

Technical File
CE/NF010a

OPEN / CLOSE OPERATED BY SPRINGS AND CABLE

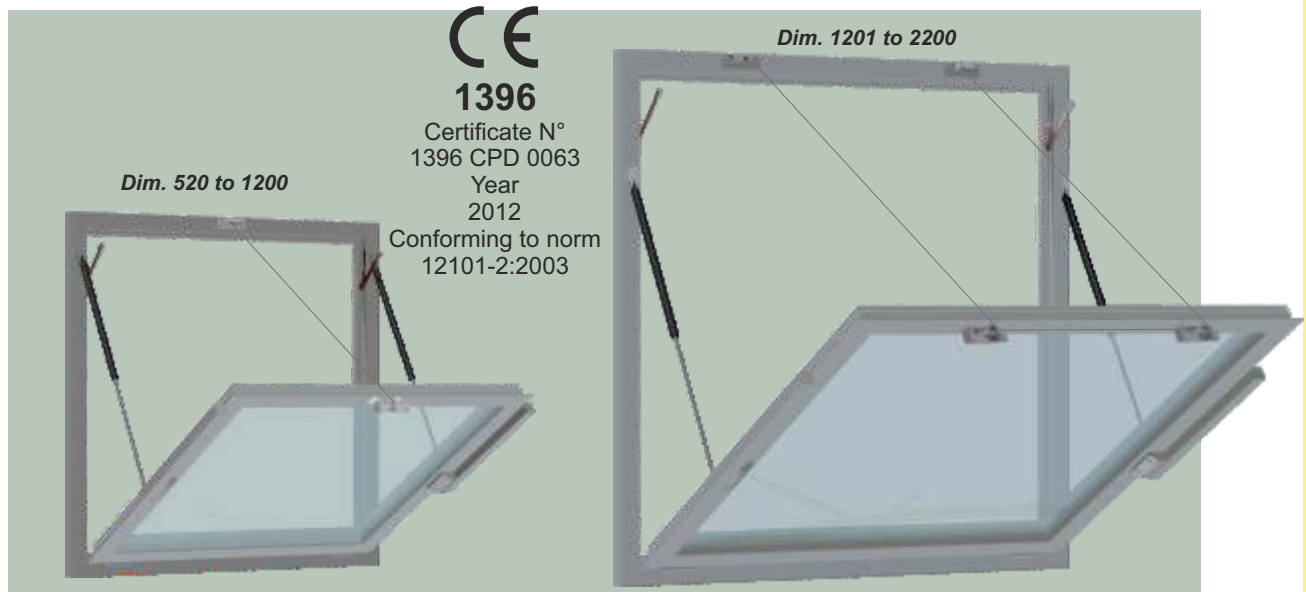
CFIN2MTxxVxRx

Description

The Mechanical EXUFACE, a CE certified facade SHEV window, has been designed to be incorporated easily and stylishly into all types of facade. Its different versions, either mechanical or pneumatic, fully meet current regulatory requirements. Easy to connect, the Mechanical EXUFACE is delivered with all its operating components already fitted in our factory, including a Ø 2.4 cable conforming to norm NFS61932. Inconspicuously mounted, the power supply can be fitted on the right or the left-hand side. Its technical design means that on models over 1200mm wide, a second locking point ensures a tight fit of the sash against the frame base, providing perfect weathertightness. Stylish, the EXUFACE can be delivered with the option of cladding painted to coordinate with the frame, thus hiding any unsightly components. Excellent performance, operated by our winch "TR20", the Mechanical EXUFACE guarantees 10,000 cycles of ventilation and 1,000 cycles of smoke exhaust !



EXUFACE



Specifications

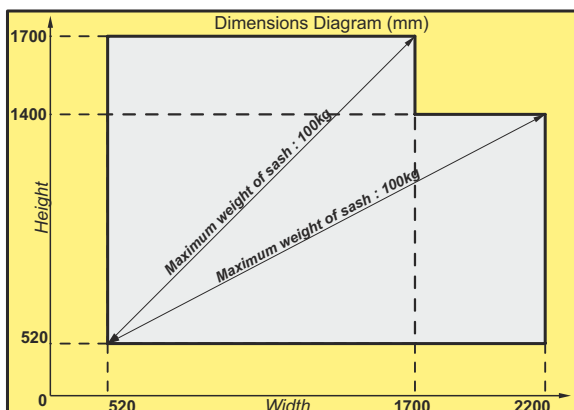
Type	: Type B (open and close)
Frame type	: Bottom hung inward opening
Opening time and angle	: Less than 60s for 60°
Bearing plane angle	: 0° in relation to the vertical.
Safety position	: Held in place by the thrust from oil pneumatic springs
Control device	: Manual or distance controlled, by the release of a steel cable
Resetting	: By winding the cable back onto the winch.
Cable feed	: According to table overleaf
Range of dimensions	: See the table below
Protection	: Zinc coating, varnishing
Colours	: RAL9010 (white), RAL9006 (metallized light grey), other colours on request
Glazing	: Glass, polycarbonate, sandwich pannel measuring between 14 and 37mm for a sash weighing 100kg maximum.



www.marque-nf.com
NF - Smoke and Heat Exhaust Ventilator

This mark certifies :
conformity to norms
NF S 61-937-1 and NF S 61-937-7
in accordance with the rules for certification NF 405
the values of the characteristics
given in this technical file.

Certification Body
AFNOR Certification
11 Rue F. de Pressensé
93571 LA PLAINE
SAINT DENIS CEDEX



Area of validity

General characteristics of Actuated devices of Safety (ADS) :

- An A.D.S. must not issue commands
- Devices which allow the control of safety and/or standby positions of the ADS
- Unlocking power external to the ADS
- Operational independence of the automatic and distance controls
- No distance controlled resetting if set in safety position by automatic control
- Resetting by distance control if the power has been interrupted during the previous resetting

General characteristics of the constituents :

- Control of the positions of the A.D.S.
- Class III for the electrical elements working under safety extra low voltage (SELV)
- Insulation of SELV electrical circuits and of the electrical circuits of other devices
- Minimum protection index IP 42
- Presence of the principal connection device
- Specific SELV connection device
- Functioning of the traction stop device
- Minimum electrical characteristics of the position contacts
- Independence of electrical control circuits from other circuits
- Test pressures of pneumatic materials

Characteristics of the distance control input :

- Characteristics of the distance control input through steel cable
- Characteristics of the electric distance control input
- Characteristics of the pneumatic distance control input

Characteristics of the power input :

- Characteristics of the electric power input
- Characteristics of the pneumatic power input

ALL RIGHTS RESERVED. OUR PRODUCTS MAY BE SUBJECT TO MODIFICATION. THEREFORE THIS DOCUMENT CANNOT BE CONSIDERED CONTRACTUAL. ALL MODELS ARE PATENTED. DO NOT LITTER THE PUBLIC HIGHWAY.

DUPUY EQUIPEMENTS

Les Ajeux - 72400 La Ferté Bernard - France
Tel. : +33 (0)2 43 60 78 60 - Fax : +33 (0)2 43 93 41 94
e-mail : clients@de72.fr

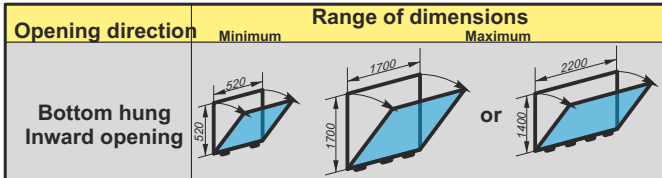


www.dupuy-equipements.com

Technical Characteristics

Material : Aluminium, glass, steel, synthetic material.
Protection : Varnishing, zinc coating.
Precautions : Stock and install away from bad weather conditions.

Entry of connections (in mm)			
Type of window	Height	Width	Cable feed
Bottom hung INWARD OPENING	Ht	Up to 1200	Ht - 80
		More than 1201	(Ht - 80) x 2
Examples : - Window 520Ht x 600 ⇒ 440 cable feed - Window 1700Ht x 1500 ⇒ 3240 cable feed			



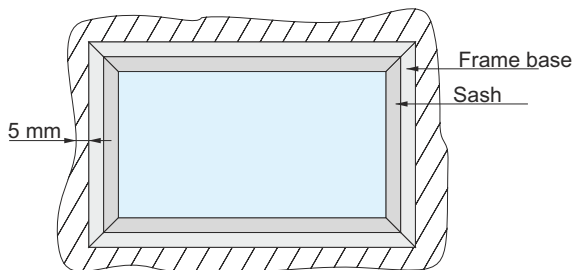
Declared Characteristics

Aerodynamic Free Area "Aa" : Depending on dimensions (consult us)
Wind Load "WL" : 1500
Snow Load "SL" : Does not apply
Low ambient Temperature "T" : 00
Reliability "Re" : 1 000 + 10 000 cycles ventilation
Heat Resistance "B_{Wall}" : 300
Reaction to fire : A1
Temperature of thermal triggering : Does not apply
Type of SHEV mechanism : Type B (open and close)

Options

- Position contacts open / close
- Finishings such as flashings, trim, joint covers ...

How to measure the window



Subtract a minimum of 5mm from the dimensions of the height and width of the cavity in the wall.

Eg. : for a cavity of 900h x 1400, the total dimensions of the window will be 890h x 1390

Installation

- When installing the window,
- First fix the window in place, 2 support wedges per side.
 - Make sure the frame base is squared up by checking 2 opposite angles
 - Check the plumb of the frame base, any vertical misalignment should be less than 2mm per metre.
- The installation, fixings and weathertightness should be carried out in accordance with the norm NF DTU 36.5 in force.
The electrical connections are made in a branch box situated outside the SHEV.

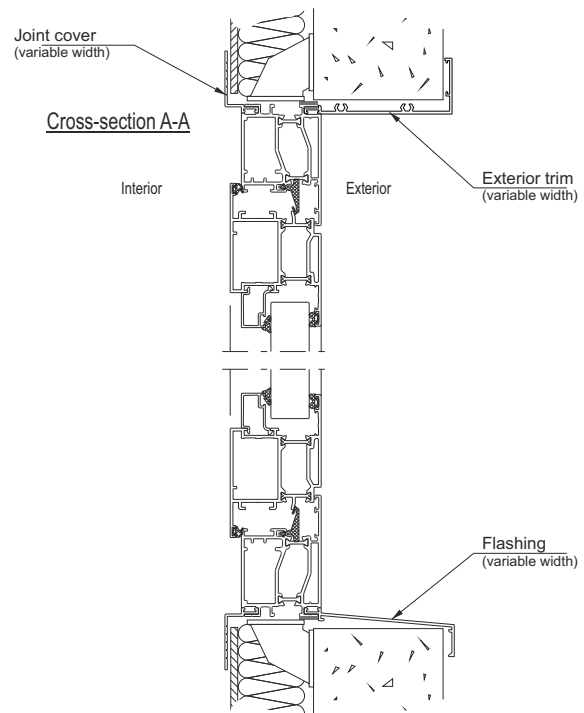
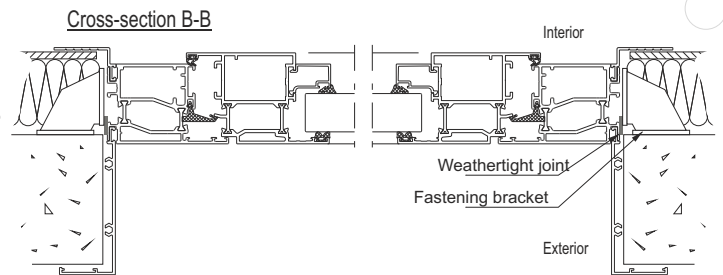
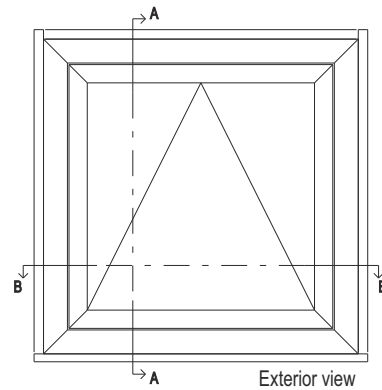
Product identification

- E.ALIM : power input
- E.TELE : distance control input
- E : transmission
- R : break
- Hpa : height of air passage
- Lpa : width of air passage

Product delivered with markings translated

Standard cross-sections

Installation in an insulated wall



DUPUY EQUIPEMENTS 72400 La Ferté Bernard DENFC - EXUFACE Produit fabriqué en 2014 Energie : Intrinsic CFIN2MT. . V . R .	CE 1396 1396 CPD 0063 12101-2-2003	Aa= x.x.xm ² , WL 1500 T (00), Re 1000 + 10000 B 300, A1, type B N° série : XXXXXXXXXXXXX N° : NF13/05.01 DENFC monté en façade hpa : xxxx mm lpa : xxxx mm E. ALIM : Energie intrinsèque E.TELE : F. résist dyn : 0.5 daN F. réarmement max: 100daN Course câble : xxxx mm	NF - Dignitaires CE variation Niveau de Garantie Niveau de Garantie Celle marque certifie : la NF S 01-15-071, les valeurs des caractéristiques www.marque-nf.com
--	--	---	---

