

Flat FUSE

with eutectic alloy

Technical File
T03524E

FUS2047 - FUS2183

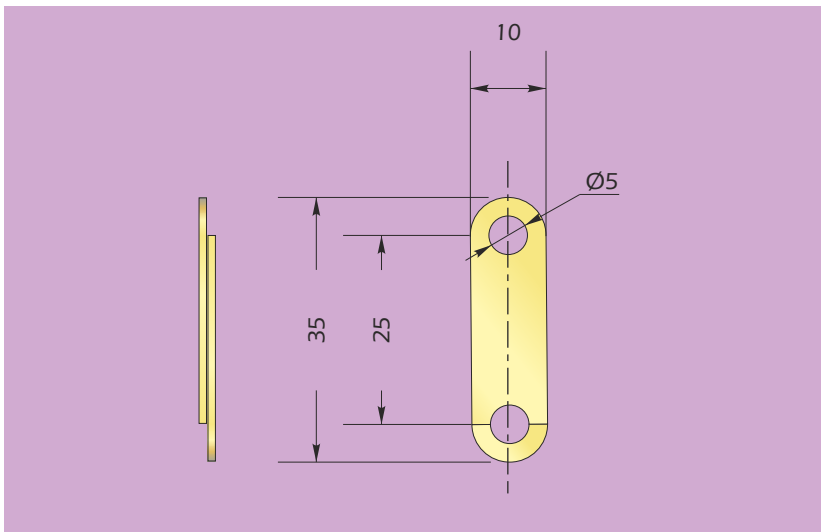
Description - General information

The sensitive element (fuse) consists of 2 pieces of brass soldered together by using an eutectic alloy.

It is a sensitive element which reacts at a nominal temperature.

In the case of a rise in temperature, the eutectic alloy melts and the two pieces in traction break apart.

This autonomous element is used, as the sensitive element in thermal, mechanical and pneumatic triggers which are installed in Natural Smoke and Heat Exhaust Ventilators (SHEVs), such as skylights, windows, apertures etc...



Technical Characteristics

Material : Brass - Eutectic alloy.
Triggering temperature : From + 47° C to + 183° C depending on model.
Traction force limit : Maximum static force which can be withstood = 50daN.
Protection : Stock and install away from bad weather conditions.
Option : Other temperatures on demand.

Reference	Nominal temperature	Tolerance
FUS2047	47°	-5 +30°C
FUS2070	70°	-5 +30°C
FUS2091	91°	-5 +30°C
FUS2110	110°	-5 +30°C
FUS2140	140°	-5 +30°C
FUS2183	183°	-5 +30°C



MUST be mounted without any mechanical load other than the tensile force between the Ø5 axis, limited to the maximum static force.

DUPUY EQUIPEMENTS

Les Ajeux - 72400 La Ferté Bernard - France

Tel. : +33 (0)2 43 60 78 60 - Fax : +33 (0)2 43 93 41 94

e-mail : clients@de72.fr



www.dupuy-equipements.com

